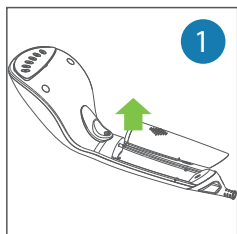




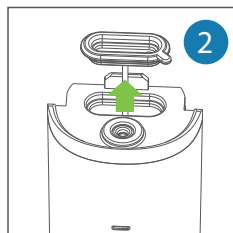
VIDEO



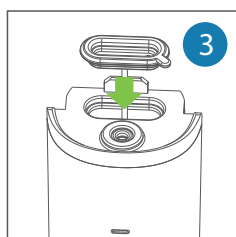
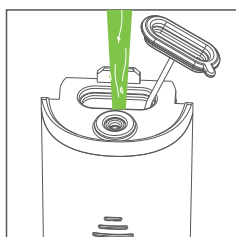
TERMS OF USE



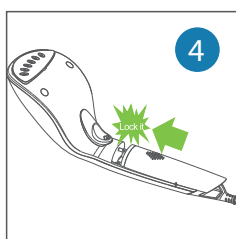
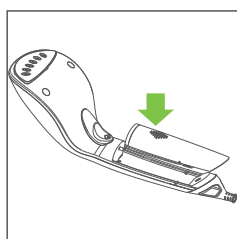
Remove the water tank by pulling it down.



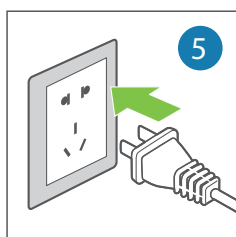
Remove the silicone plug from the water tank.



Fill the tank with the water and put the plug.



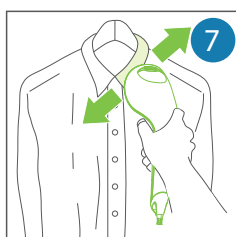
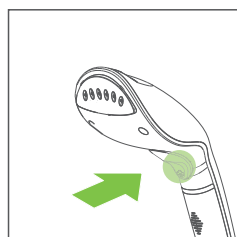
Put the water tank.



Plug the iron into the mains and wait 45".



Put the clothing and hang it where it is stable.



Press the bottom and iron the clothing up and down and viceversa until the steam leaves the garment without wrinkles.

Iron with one hand, with the other hand help to stretch the garment, this will facilitate the ironing of the clothing.

When finished disconnect the iron and empty the water tank.

When ironing if the water tank is empty, repeat the process from point num.1.